

Performance perfected.

Faster clear.
Faster dark.*



ZEISS PhotoFusion X

Photochromic Lenses



zeiss.com/vision

Seeing beyond

* compared to previous generation ZEISS PhotoFusion

1

We understand that when you wear photochromic lenses, you need them to fade back to clear fast so you can always look good and see clearly.



ZEISS PhotoFusion X
clears up to 2.5x faster¹
indoors.



2

We know that you don't always have your sunglasses at hand when you need them. But you definitely still want protection from UV and glare when you go outside.



Outdoors, ZEISS PhotoFusion X tints to **sunglass-level darkness** in seconds.



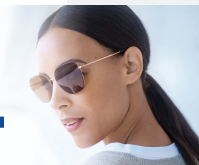
Folded photochromic dye molecules in clear state.

3

We know that spending more and more time on digital devices might lead to perceived digital eye strain - especially indoors.

ZEISS PhotoFusion X provides the
highest blue light protection
available in a clear ZEISS lens.

4



We're aware that light reactive lenses might be "the practical choice", but you still want to look fashionable wearing them.

ZEISS PhotoFusion X darken to
4 popular sunglass colours
and can be upgraded with
fashionable flash mirrors.



Seeing beyond

Photochromics re-envisioned. Performance perfected.

Thanks to a completely new photochromic system, ZEISS PhotoFusion X dye molecules now react faster and have more space and freedom to fold or unfold at their maximum level of performance as light conditions change.



Unfolded photochromic dye molecules in tinted state.

9 out of 10
feel less digital eye strain.²



Blue light protection is built into the lens with our ZEISS BluePro lens material. Combined with the PhotoFusion® X treatment, the lenses block up to **50 %** of potentially harmful **blue light indoors** and up to **94 % outdoors³** when fully tinted. They also block **100 % UV** radiation at all times.



Lucas Wilson,
professional freerunner
and parkour athlete wearing
ZEISS PhotoFusion X grey in clear.

ZEISS
PhotoFusion X
Which colour will
you get?



Grey

Pioneer

Extra Grey

Brown



References

1. Testing by independent laboratory in USA, 2021 according to requirement in ISO 8980-3. Based on the average speed (%T/min) of fade-back from fully activated state to 80 %T at 23°C in grey 1.50 index (CR607) HC only form compared to a well-known photochromic brand's latest generation in 1.5 grey
2. Consumer Acceptance Survey - Top 2 boxes results of n=187 spectacle lens wearers, who purchased & wear ZEISS BlueGuard lenses in China, May 2021
3. Analyses by Technology and Innovation, Carl Zeiss Vision GmbH, DE 2021. Based on Blue Violet Block (BVB) metric that quantifies the amount of light 400–455 nm blocked by PFX Extra Grey 1.6 HC form